

The image features the GIGABYTE logo in the top left corner. The background is a dark blue gradient with a pattern of vertical lines and dots in various shades of blue, creating a digital or data-like aesthetic.

**GIGABYTE™**

# 技嘉科技

## 2022 Q3 投資人說明會

2022/11/17

# 聲明

本簡報中之任何意見與資訊，如因不同的假設和/或不同條件而有所變更，則本公司恕不另行通知。本公司並無義務更新或維護本簡報中所含任何資訊。本公司對於本簡報之內容與資訊不作任何明示或默示，將來或進行中之聲明與保證。對於本簡報內容與資訊之準確性或完整性，本公司均不對因使用本簡報或其內容所致任何損害負任何責任。

本簡報含有對未來展望的陳述，包含但不限於技嘉的當前議題、計畫與展望。對未來展望的陳述係反應本公司截至目前為止，對於未來的營運計畫與經營目標，以及對未來事件、未來經濟表現和各種財務狀況的當前看法。這些未來展望的陳述涉及已知與未知風險、不確定因子以及其他可能由前述陳述明示或默示導致與真實結果有實質差異的因子。

# 議程

2022 年Q3財務現況

策略與展望

產品資訊

企業社會責任

Q&A

# 財務現況

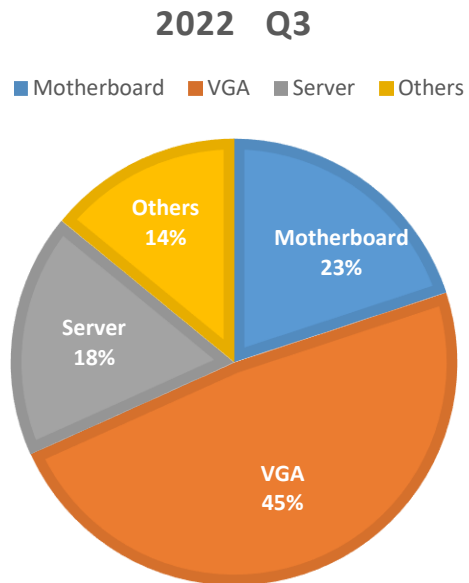
# 2022 Q3 Income Statement

( in NT\$100Mn)	2022Q3	2022Q2	QoQ	2021Q3	YoY
Net Revenue	241.92	226.60	6.76%	312.90	-22.68%
COGS	211.91	195.20	8.56%	240.30	-11.81%
Gross Profit	30.01	31.43	-4.52%	72.63	-58.68%
Operating Expenses	27.25	17.60	54.83%	33.01	-17.45%
Operating Profit	2.75	13.82	-80.10%	39.61	-93.06%
Pre-Tax Profit	15.27	17.62	-13.34%	45.86	-66.70%
Tax	3.58	7.80	-54.10%	9.96	-64.06%
Net Profit	11.68	9.82	18.94%	35.91	-67.47%
EPS	1.84	1.55		5.66	
Gross Margin	12.40%	13.87%		23.21%	
Operating Margin	1.14%	6.10%		12.66%	

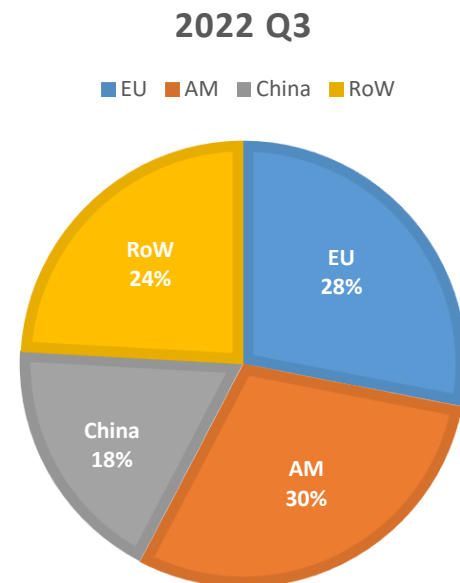
# 2022 Q3 Balance Sheet

in NT\$100Mn	Sep.30,2022	June.30,2022	QoQ	Sep.30,2021	YoY
Cash & Equivalents	93.06	103.41	-10.01%	85.57	8.75%
Accounts Receivable	121.35	116.16	4.47%	169.70	-28.49%
Inventories	229.06	299.57	-23.54%	224.02	2.25%
<b>Current Assets</b>	<b>470.27</b>	<b>554.15</b>	<b>-15.14%</b>	<b>514.77</b>	<b>-8.64%</b>
Fixed Assets	50.09	48.76	2.73%	42.50	17.86%
<b>Total Assets</b>	<b>557.78</b>	<b>645.33</b>	<b>-13.57%</b>	<b>598.66</b>	<b>-6.83%</b>
Accounts Payable	74.64	81.13	-8.00%	119.02	-37.29%
<b>Current Liabilities</b>	<b>199.84</b>	<b>301.57</b>	<b>-33.73%</b>	<b>256.71</b>	<b>-22.15%</b>
<b>Total Liabilities</b>	<b>211.44</b>	<b>311.43</b>	<b>-32.11%</b>	<b>266.95</b>	<b>-20.79%</b>
Paid-in Capital	63.57	63.57		63.57	0.00%
<b>Stockholders' Equity</b>	<b>346.34</b>	<b>333.90</b>	<b>3.73%</b>	<b>331.71</b>	<b>4.41%</b>
Avg Days of Inventory	113	145		83	
Avg Days of AR	44	48		41	
Avg Days of AP	49	50		42	
<b>Avg CCC days</b>	<b>107</b>	<b>143</b>		<b>82</b>	

## 2022 Q3 Revenue by Product Line



## 2022 Q3 Revenue by Geography



# 策略與展望



# Business Direction

---

## 2022 Q4

- 消費型電子產品 ( MB與VGA ) 在庫存有效管理後將會走出谷底, 恢復成長
- 伺服器產品先前受到中國封控以及CPU緩交而造成的影響, 將會遞延在Q4開始出貨

## 2023

- 消費型電子產品 ( MB與VGA ) 明年仍有至少single digit成長
- 伺服器產品明年仍看雙位數成長

# 產品資訊

# 伺服器

## New Generation of Purpose-built Servers

In the next two quarters, we will welcome a new generation of AMD and Intel processors to the enterprise market. In response to the ultra-high-speed intercommunication challenges inherent in the chiplet design of the post-Moore era, GIGABYTE has established a large R&D database to provide solutions developed from the depth of R&D experience, helping engineers quickly develop new platforms that can ensure high-speed signal integrity. As a result, we can launch a wide range of servers optimized for diverse workloads to coincide with the launch of the new processors.



# 伺服器

## Complete Infrastructure Solution


Product autonomy enables GIGABYTE to implement and introduce a wide variety of server hardware to the market. Not only do we have the widest variety of GPU accelerated computing servers on the market, but we also are one of the few brands promoting ARM servers through channel sales. Besides hardware, we further assist customers with product validation, allowing consumers to create application-optimized server platforms using hardware configurations that suit their needs, providing customers with flexible options so they only get the features they require while simultaneously reducing user costs.

CANONICAL

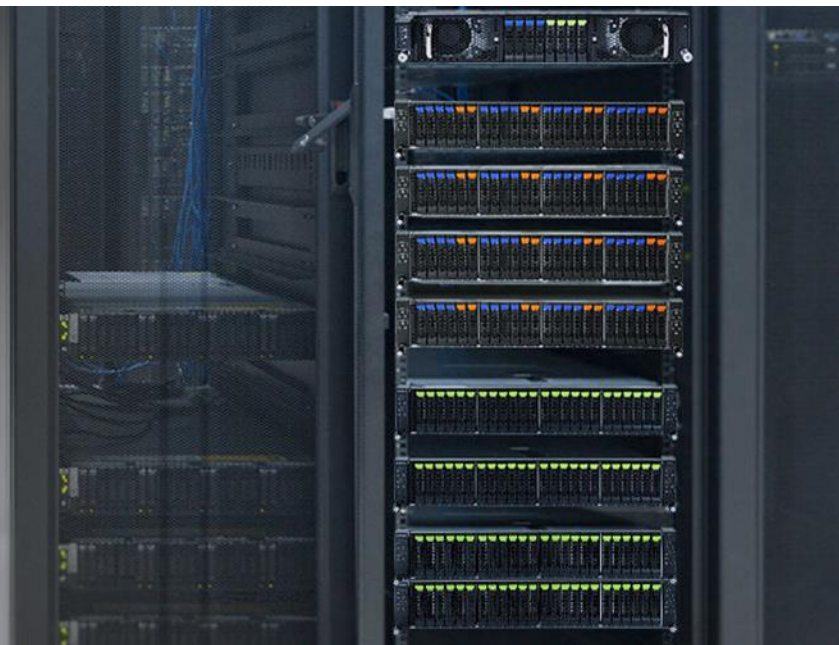
citrix®

 Microsoft

 Red Hat

 SUSE

vmware®



# 主機板

## AORUS Gaming and AERO Creator Motherboards for Intel Platform

Powered by brand new Z790 chipset and the latest Intel 13th and 12th Core CPUs, offering exceptional performance, excellent thermal design and system build convenience, that will attract new and existing users alike. Launch in Q4 this year.



# 主機板

## AORUS Gaming and AERO Creator Motherboards for AMD Platform

Powered by the X670 & B650 series chipset, support for the latest AMD 7000 Series AM5 CPUs, DDR5 memory, and PCIe 5.0 hardware design, offering exceptional performance that will attract new and existing users alike. Launch in Q4 this year.



A NEW ERA IS COMING

# DAYBREAK HOUR

## X670E AORUS MASTER

AMD RYZEN  
AMD SECRET AM5  
X670E



# Absolute Matter

AORUS B650E/B650 Gaming Motherboards

# 顯示卡

## GeForce RTX 4090 Graphics Cards

To fully unleash the unparalleled performance of NVIDIA GeForce RTX 4090, GIGABYTE equipped its graphics cards with amped-up designs and improved features, giving hardcore gamers and content creators more of everything.

AORUS



AORUS GeForce RTX® 40 Series

# Apex of Cooling

WINDFORCE Bionic Shark Fans



# 顯示卡

## GeForce RTX 4080 Series Graphics Cards

GIGABYTE provides both WATERFORCE and WINDFORCE thermal solutions, including AORUS XTREME water-cooled graphics cards, AORUS MASTER, GAMING OC, AERO OC, and EAGLE OC air-cooled graphics cards, which all meet the diverse requirements and needs.





# 筆記型電腦

## AORUS 17X/16/15X Gaming Laptops

GIGABYTE has defined users' vision with Raptor lake laptops, powered by 13th gen Intel Core platform. This year, with the latest Nvidia graphic card embedded, for gamers to truly reshape the game.



AORUS 17 GAMING LAPTOP  
**Reshape the Game**



# 筆記型電腦

## AERO 14 OLED & AERO 16 OLED

GIGABYTE has defined users' vision with Raptor lake laptops, powered by 13th gen Intel Core platform. With X-rite and Pantone dual color calibration, for creators to truly define their vision again.



## M32UC Gaming Monitor

The world's first 31.5-inch 4K 144Hz curved gaming monitor. Equipped with the SuperSpeed VA panel, the response time can be shortened to 1ms for an extremely smooth and immersive gaming experience. The 3000:1 high contrast ratio makes the M32UC a great monitor for gaming in dark rooms.



# 螢幕

## M28U/M32U Arm Edition Gaming Monitor

The 4K pro gaming experience is now lifted to a whole new level by the Arm Edition gaming monitors. GIGABYTE M28U/M32U Arm Edition introduces an ergonomic monitor arm that adapts to every desktop scenario. From PC gaming, console gaming, to even streaming media.



# 電源供應器

## Best Power Supply for RTX 40 Series Graphics Cards

GIGABYTE presents a series of PSUs that are next-gen PCIe 5.0 compatible and go perfectly with the GeForce RTX 40 Series graphics cards.

Power Supply for RTX 40 Series

## Power through the game.

GIGABYTE presents a series of PSUs that are next-gen PCIe 5.0 compatible and go perfectly with the GeForce RTX 40 Series graphics cards.

16-pin Connector Compatible\*

\* Only for PCIe 5.0 models.

Support Model



AORUS  
P1200W 80+ Platinum



GIGABYTE  
UD1000GM P65



GIGABYTE  
UD1000GM



GIGABYTE  
UD850GM P65



GIGABYTE  
UD850GM



# 企業社會責任

# 創新科技、美化人生、永續經營、永續品牌

落實節能與製程改善, 溫室  
氣體排放

▼ 38.85%  
單位排碳營收強度  
▲ 4.7 times

延續生態多樣性,  
從台灣到全球種植  
樹木

89,399 trees

推動永續供應鏈, 水  
量使用減少

▼ 33.56%



舉辦講座, 育成同仁  
永續意識, 教育時數  
87,727 hours

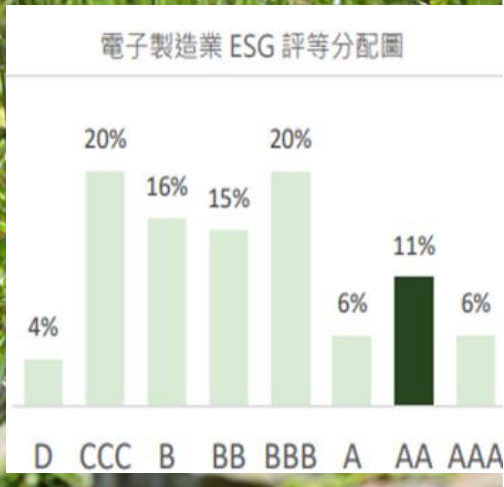
培育工業設計人才, 舉  
辦學生創意比賽連續

19 years

降低營運對環境衝擊,  
廢棄物排棄

▼ 1.54%  
單位廢棄物營收強度  
▲ 2.9 times

# Uphold the spirit of ESG



**GIGABYTE Ranks in the TOP 10%**  
of OSHA Active Evaluation of Corporate **Occupational Health and Safety** from companies' CSR Reports



**Awardee  
(Listed Companies)**

- 2303 聯電
- 2330 台積電
- 2337 旺宏
- 2376 技嘉**
- 2377 微星
- 2383 台光電
- 2409 友達
- 2439 美律
- 3037 欣興
- 3231 緯創
- 3481 群創
- 3711 日月光投控
- 4919 新唐
- 6239 力成
- 6669 緯穎
- 8021 尖點
- 8150 南茂

- ✓ OSH commitment, targets, and organizations
- ✓ OSH disclosure in accordance with GRI403 and SASB standards
- ✓ OSH risk identification, management, and implementation
- ✓ Overall OSH performance and mid- and long-term targets
- ✓ Obtain a third-party certification



# 循環經濟

Gigabyte founded Bestyield based on its expertise in PCB repairs and customer service for more than 20 years. Bestyield aims to:

- Establish a sustainable circular economy business model with a core philosophy of "*Mottainai*" (不要浪費)
- Build a market for recycling and reselling electronic products without brand restrictions

In 2021, the service model reduced **90,000 tonnes of carbon emissions**(碳排放量) by avoiding **634 tonnes of e-waste**



## Outcome of Circular Economy

Trans-industrial cooperation  
RMA centers transform into **G+3C outlet showroom**  
Launch **cross-border e-commerce** services



G+ 3C Outlet 概念店



MB & VGA – 3 months  
Refurbished NB – 1 years  
New NB – 2 years

## Co-create Business Opportunities

Provide **B2B laptop rental service** to enterprises  
Realize **100% of products returning for repairing**  
Recycled rental products return to market after  
refurbished and **certified by the Sweet Lemon** standard

Repair  
Refurbish  
Resell  
Repurchase



Sweet Lemon  
Refurbished Product  
Certification



Manufacturer  
approved

# Thousand Mile Trek

## - Go Green Taiwan

Since 2015, a group of nature lovers at GIGABYTE decided to venture beyond the office and launch the "Thousand Mile Trek - Go Green Taiwan" round-island trek. The trekkers would pick up plastic rubbish along the way.

As of October 2022:

 **1,106.76 km**  
Walking distance

 **31,991 hours**  
Cumulative environmental service time

 **15,722.38 kg**  
Picked and removed wastes



運綠台灣

千里足夢



累計徒步里程：1,106.76公里

累積清除垃圾：15,722.38公斤

志工時數累積：31,991小時

**2015** 94.2 KG

- 01 誓師大會
- 02 草嶺古道
- 03 合興車站

**2016** 494.61 KG

- 04 國境之南
- 05 瘋媽祖佑安康
- 06 峨嵋湖巡禮
- 07 南迴越嶺道
- 08 發現好望角

**2017** 434.68 KG

- 09 府城懷古行
- 10 媽祖文化薪傳行
- 11 蘭陽之美
- 12 探訪山城
- 13 噶瑪蘭行腳

**2018** 2,071.84 KG

- 14 漫步白沙屯
- 15 壯遊蘇花
- 16 東岸鐵道行
- 17 文創行旅
- 18 大甲好運通

**2019** 3,769.13 KG

- 19 跨年作伙行
- 20 打狗走透透
- 21 戀上龍洞灣
- 22 海廢大逃出
- 23 再會台中港
- 24 雙足慶雙十

**2020** 2,575.96 KG

- 25 西濱風情
- 26 車過枋寮
- 27 悠遊北海岸

**2021** 2,885.63 KG

- 28 鹿港小鎮
- 29 獅頭望燭台
- 30 寶桑山海戀
- 31 邂逅新金山
- 32 日昇太麻里

**2022** 3,396.33 KG

- 33 糖都物語
- 34 流浪到淡水
- 35 布袋好厝邊



# Q&A

**GIGABYTE™**